



ENHANCE YOUR OASIS WITH THE LUXURY PACKAGE STANDARDS

Pamper yourself with the following amenities:

KITCHEN AMENITIES

- 3x8 GRANITE slab center island and counters
- Full height tile backsplash with glass accents
- SS heavy-gauge undermount sink, 9" deep
 - » Single or
 - » Double bowl

APPLIANCES

- Stainless steel (SS) Frigidaire Gallery gas range, **OR** SS Frigidaire Gallery electric flat-top range
- Built-in SS Gallery microwave and drop-zone/work space counter
- Hidden-control, SS low-noise dishwasher
- Available, option, 5' Frigidaire refer-freezer
 - » Offers a commanding, commercial-style look



LIGHTING

- 5 recessed cans with LED lights
- Pendant island lights
- 5-light chandelier in dining/nook
- Under-cabinet lighting in kitchen
 - » Provides task lighting at counters
- Decora rocker-switches

CABINETS AND CLOSETS

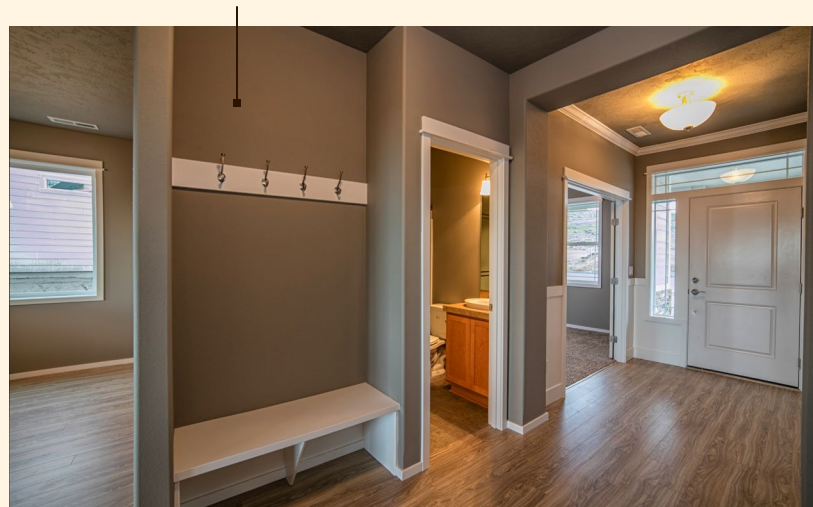
- Merillat, hard-surface Birch cabinets, 5 finish options
- Expanded, 42" upper cabinets offer more storage
- Shaker-style, square-cut cabinet drawer fronts
- Soft-close drawers in kitchen
- Roll-out lower drawers in kitchen
- Cabinet hardware/pulls in kitchen
- 5-stack storage racks built-ins, master closet
- All wood closet and pantry interiors, not wire
- Spacious, walk-in pantry, per plan

FLOORING

- Ceramic tile or wood laminate floors
 - » Your choice, entry, thru kitchen, nook, powder room

ENTRY

- Shadowbox or bead board wainscoting
- Crown molding at entry
- 3-1/2" base molding standard throughout, flat style or colonial
- Drop-zone bench, wainscoting, cubby, hooks, per plan



INTERIORS

- 9' ceilings on main floor, some higher, per plan
- Custom 2-color satin interior paint package
- Santa Fe ceiling texture finish
- 5' double doors to den
- Choice of 5 interior door styles
- Decorator Ceiling fan + light
- 5.1 Surround + speakers
 - » **OR** Man door at garage;
 - » **OR** Upgraded lighting package
- 3-way mirror in master suite, per plan

MASTER BATH

- Ceramic tile flooring and countertops
- 4" glass/tile backsplash
- 2 Kohler decorator elevated sinks
 - » Choice of square or oval sinks
- 4 x 4' tile wall, euro-style/frameless shower
 - » Feels like walking into a high-end hotel
- Tumbled stone or glass accents
- Large corner soaking tub, per plan
- Tile tub deck, backsplash
- Painted wood shelving and rod
- Three-way mirror, per plan
- 5-stack shelving unit

BATH AND LAUNDRY

- Pedestal sink, changes to cabinet sink when a shower or tub is chosen
- Tile or wood laminate flooring
- 4" backsplash, main bath

EXTERIOR

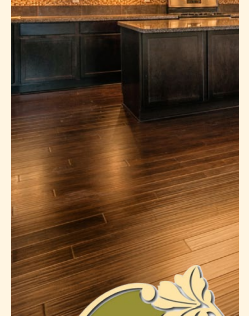
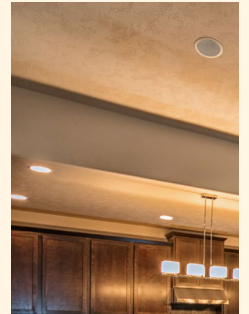
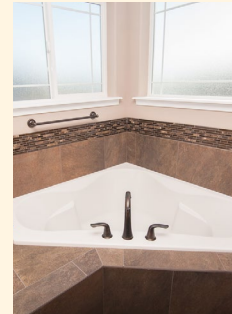
- Enclosed soffits, all models
- Covered patio, all models

GARAGE

- 2-story homes come with 3-car enclosed garage
- 1-story homes come with 2-car enclosed garage
- One garage door opener and touch pad
- Walls fully sheetrocked and taped
- All walls touching interior of home insulated

ELECTRICAL AND HVAC

- Network media panel
- Tankless gas hotwater system or hybrid electric
 - » Builder's choice
- 14 SEER heat pump (electric where gas unavailable)



THE LUXURY PACKAGE STANDARDS

